



Mining Public Information & Listening Session

July 24, 2010

Welcome & Introductions

- **Town of Lynne Representatives**
- **Oneida County**
 - **Mining Oversight / Local Impact Committee**
 - **Forest Director**
 - **Planning & Zoning Director**
 - **Corporation Counsel**
- **Ladysmith City Administrator**
- **Tamerlane Representatives**
- **University of Wisconsin Extension**
- **Wisconsin State Senator**

Agenda

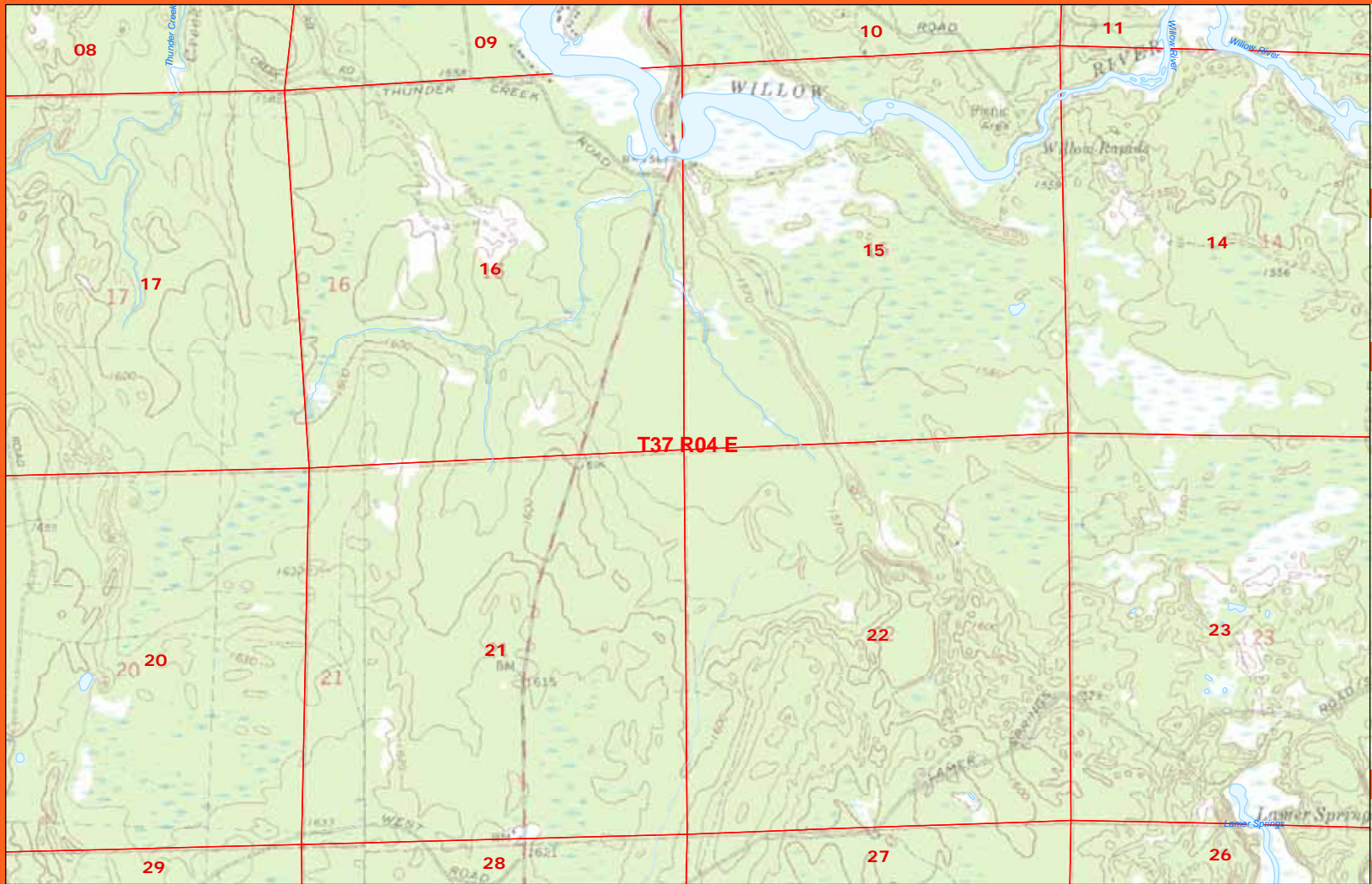
- **Purpose of Meeting**
- **Background & History**
- **County Board Actions**
- **Recent History**
- **The Ladysmith Experience**
- **Tamerlane**
- **Listening Session**
- **Next Steps**

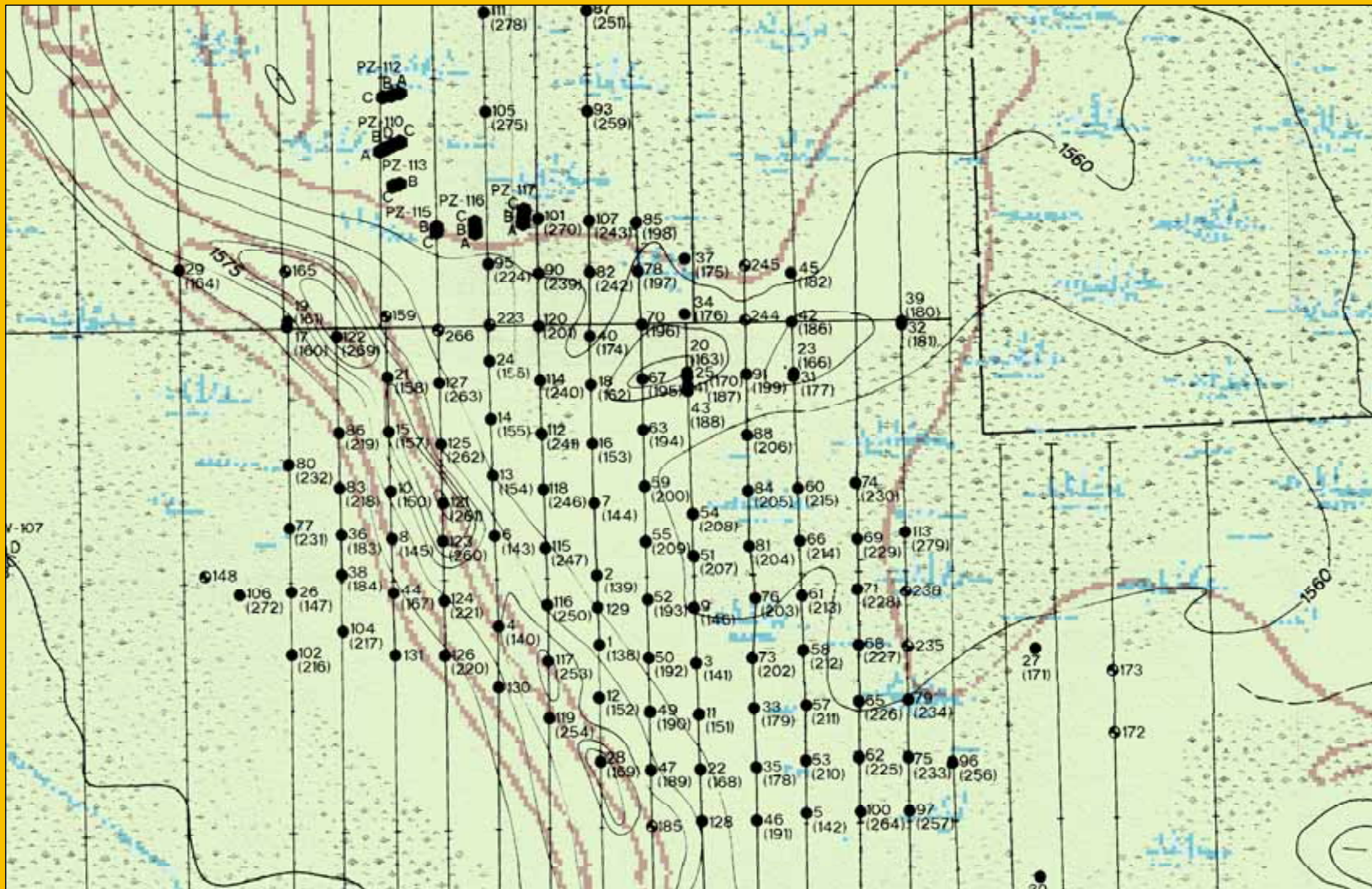
Purpose of Meeting

- **Listening to the public**
- **Provide information to the public**
- **Bad Idea versus Good Idea**
- **Early stages of process**
- **Respect and courtesy**
- **Please save comments for Listening Session**

Discovery

- **Competitive bidding for leasing (late-80s)**
- **Lease awarded by County Board, 1989**
- **Discovery hole:**
 - LYN 90-1 completed in January 1990**
 - LYN 90-2 completed shortly thereafter**
- **Announcement of discovery of Lynne Deposit, June 1990**





Cross-section of Lynne Deposit

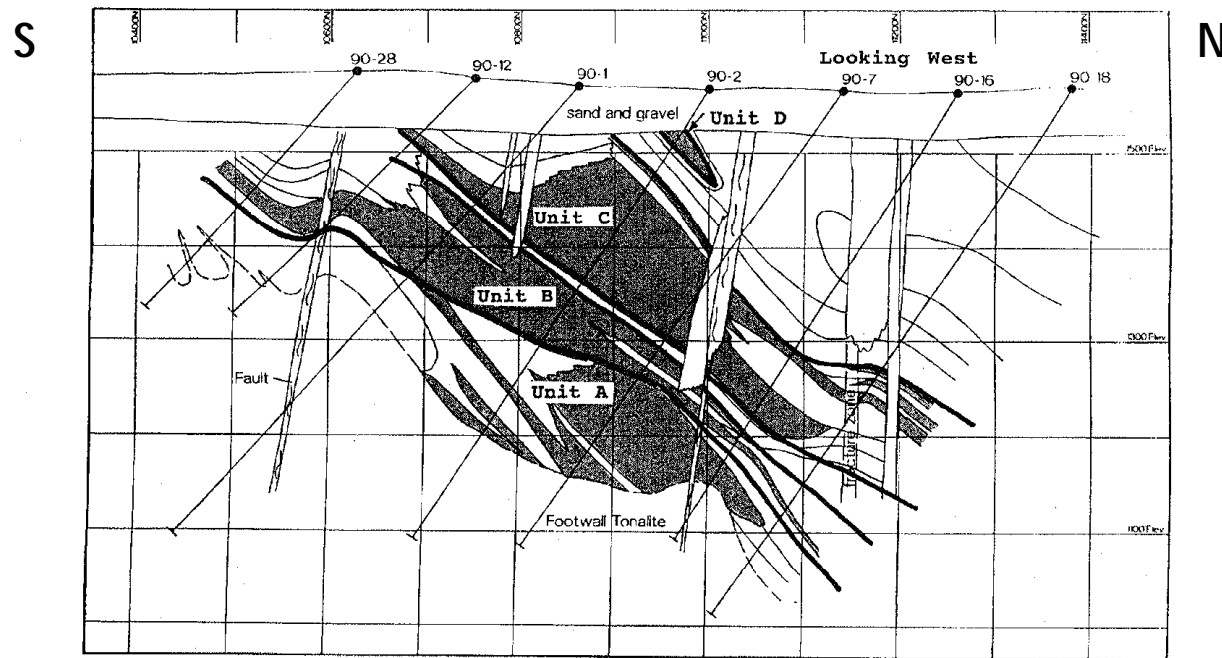
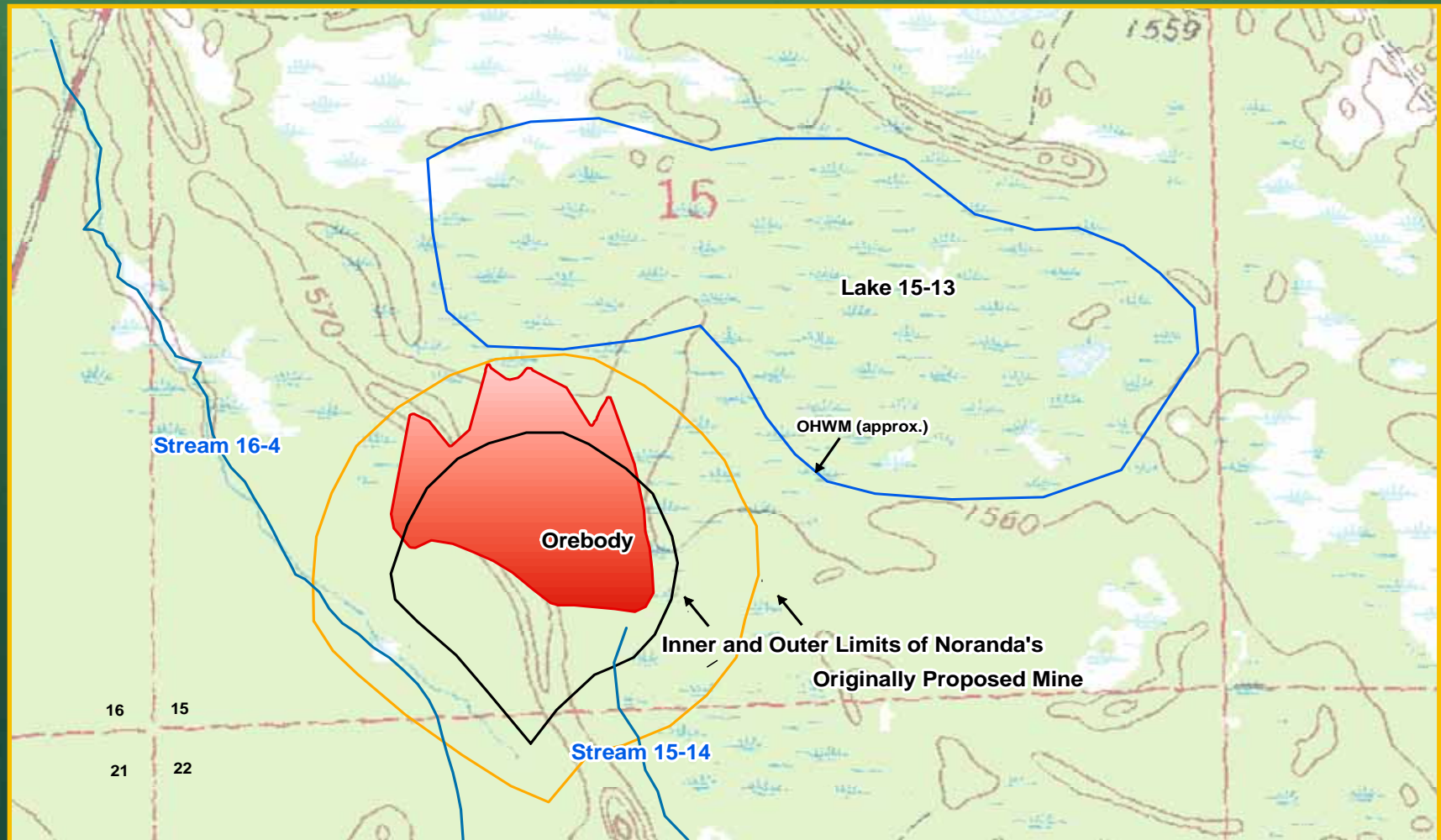


Figure 6

Sulfide Units
(Section 10,000 E.)
Lynne Base-Metal Deposit
Oneida County, Wisconsin

From Adams, 1996

Lynne Deposit and Wetlands, Lakebeds, and Streams

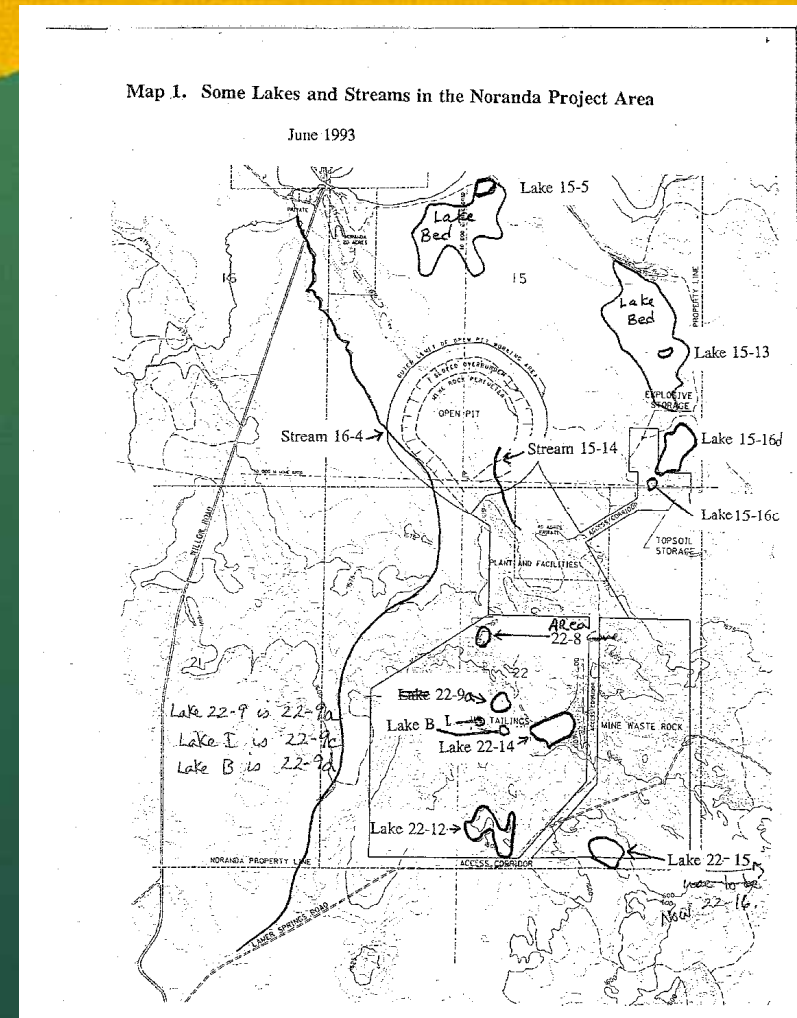


Co-location of Streams and Lakes with Surface Facilities of the Proposed Mine

Proposed open pit mine ...

Proposed Surface Facilities ...

- tailings basin
- waste rock pile
- processing plant
- topsoil storage



The Regulatory Framework

- Starts with Access and Oneida County, as the Owner, controls access through its leasing program
- Federal + State + County ...
 - ... all levels of regulations apply
- Focus now is on decision to allow access for exploration (drilling) which is ...
 - ... regulated by state (NR 130) ...
 - ... and by county [9.61, sec I] ...and, later, access for (but not necessarily approval of) mining at some time in the future.

County Board Actions

- **Resolution #54-87 (affirmed in September 2009)**
 - **Past policy: Not to enter into any exploration and mining agreements**
 - **Revised policy: May enter into mineral prospecting and mining leases for lands in the County Forest**
 - **Contains leasing & bidding requirements**
- **Resolution #50-88**
 - **Moratorium until end of December 1988**
 - **During that time mining ordinance was developed**
- **Resolution #44-89**
 - **Awarded three exploration mining rights contracts**
 - **August 1997 last of three contracts terminated/expired**

Recent History

- **Interest expressed by Tamerlane (2009)**
- **Are others interested?**
 - **County required to conduct bidding process**
- **Mining Oversight / Local Impact Committee**
 - **Monthly meetings**
 - **Requested reconstitution Investment and Local Impact Fund Board**
 - **The Ladysmith Experience**

The Ladysmith Experience

- **The Flambeau Mine**
 - **Discovery 1967**
 - **Production 1991-1995**
- **Open Pit**
- **Mining company owned deposit**
- **Comments by Ladysmith attendees**
- **Comments by Ladysmith City Administrator**

Tamerlane

VENTURES INC.



TAM: TSX-V

Blaine, Washington

Tamerlane
VENTURES INC. 

Directors

NAME	BACKGROUND
Margaret Kent	Mine Finance & Development
Ross Burns	Base Metal Mining & Exploration
W. J. V. Sheridan	Canadian Corporate Law
Cowan McKinney	Accounting, Management
Eugene Larabie	Mine Engineering & Development
Dr. E. van Hees	Asst. Prof. Geology, Wayne State University
F. J. Bracken	Concentrate Sales

Management

Margaret Kent, MSc., Executive Chairman

- Raised over \$1 Billion in financing for mining projects.
- Including 5 gold mines, a large copper-gold mine and several base metal projects .

Ross Burns, P.Geo., President

- 40 years base metal and gold mining experience including exploration, mine and property development, and reserve estimation.

Mike Willett, P.Eng., Chief Executive Officer

- Mine Manager for the HBM&S Snow Lake Mine, Manitoba.
- Mine Superintendent HBM&S Trout Lake Mine, Manitoba.
- Senior Mine Engineer, Trout Lake.
- Senior Mine Engineer, HBM&S project development group.

Wolfgang Schleiss, P. Geo., Vice President Exploration

- 25 years of base metal exploration in PreCambrian and Sedimentary settings

Tamerlane's Current Assets

Pine Point Lead-Zinc

Pine Point is a Mississippi Valley (limestone hosted) lead-zinc mining trend hosting multiple deposits. Currently Tamerlane has outlined:

Proven & Probable	7,790,271 t	3.01% lead, 6.16% zinc
Measured & Indicated	10,628,079 t	1.11% lead, 2.39% zinc
*Historic Resources	50,332,000 t	1.19% lead, 3.79% zinc

Los Pinos Oxide Copper

*Historic Resources 40,000,000 tonnes at a grade of 0.4% Copper

* Taken from historic records believed to be accurate. No current NI 43-101 compliant resource calculation has been completed on these deposits nor have they been examined by a qualified person. The resources are not to be relied upon.

Tamerlane's Interest

- Undeveloped mineral belt.
- Deposit is known and is potentially available for lease
- Corporate objective is development not exploration.
- Experience in developing mines in a safe, environmentally responsible & community supported manner.
- Proven track record in developing positive working relationships with Native Americans and Local Communities.

Confidential
Internal Use Only



Mining in Wisconsin

- Wisconsin currently has mining regulations in effect, which although onerous, are not insurmountable for developing a mine in the state.
- Northern Wisconsin is an economically depressed area reliant primarily on tourism and forestry.
- Mining provides high paying jobs directly through mining and milling of the ore, construction of the mining facilities and purchase of supplies.
- Mining supports the economy in the area of the mine indirectly through support services for the mine plus housing and services for the employees and further trickle-down economic benefits.

Confidential
Internal Use Only

T a m e r l a n e
VENTURES INC. 

Lynne Deposit

- Located in Oneida County, north-central Wisconsin.
- Zinc and lead-rich base metal deposit with precious metal credits.
- 8,000,000 tons @ 8.7% Zn, 0.64% Cu, 1.65% Pb, 0.023 opt Au, 2.45 opt Ag.
- Mineable by underground methods with small surface footprint.

Confidential
Internal Use Only

Tamerlane
VENTURES INC. 

BENEFITS OF DEVELOPING LYNNE DEPOSIT

- **MINE AND MILL CONSTRUCTION JOBS**
(estimated cost of mine construction \$150 to 200 million)
- **300 HIGH PAYING MINING JOBS**
- **SPIN OFF OF MILLIONS INTO LOCAL ECONOMY**
- **LONG-TERM INFRASTRUCTURE THAT CAN BE USED
AFTER MINE CLOSURE**

Development Process

ITEM	ACTIVITY
A) Obtain Lease	Oneida County approval of mining Negotiation of Mining Lease
B) Report for Exchange	Initial technical report for stock exchange
C) Deposit Confirmation	Environmental Baseline Studies Drill confirmation of deposit Metallurgical studies Technical report confirming resources

Development Process

ITEM	ACTIVITY
D) Feasibility	Feasibility Study, Economics
	Completion of Environmental Studies
	Wisconsin Mine and Mill Permitting
E) Financing	Estimate \$150,000,000
F) Construction	Mill
	Mine Development
	Concentrate Load-out at Railroad
G) Production	

Summary

- TAMERLANE IS A COMMUNITY-ORIENTED, ENVIRONMENTALLY RESPONSIBLE COMPANY.
- DEVELOPMENT OF THE LYNNE DEPOSIT COULD BRING SIGNIFICANT ECONOMIC BENEFITS TO THE COMMUNITY.

Tamerlane

VENTURES INC.



TAM: TSX-V

Tamerlane
VENTURES INC. 

Listening Session

- **Courtesy and respect to all participants**
- **Will share all information currently available**
- **Will capture general theme of comments**
- **One spokesperson for group comments**
- **Facilitator may have to limit comment times**

Next Steps

- **Posting to Oneida County website**
- **Committee will consider issues raised**
- **Future listening and information sessions**
- **You are invited to attend Mining Oversight Committee Meetings**
 - **August 12 at 9:30 A.M. Oneida County Courthouse**
- **Thank you for coming**